

# *FIRE CRASH RESCUE STATION*

## *CASE STUDY*

Tim Geiger, AIA  
Buildings & Infrastructure  
Regional Leader

Leo Fernandez, Assoc. AIA  
Aerospace & Defense  
Production Technology Leader



*ARCHITECTURE | ENGINEERING | CONSULTING*

# Introduction

**Tim Geiger, AIA**  
**Aerospace & Defense**  
**Buildings and Infrastructure Regional Leader**

Tim Geiger is a registered architect whose work focuses on the Aerospace and Defense industries. He has 14 years of experience working with federal clients, planning and designing facilities worldwide.

Tim received a Bachelor of Design degree from the University of Florida in 2004 and a Master of Architecture from Boston Architectural College in 2010.

Tim is currently working on two projects local to Patrick Air Force Base. The Guardian Angel facility for the 308<sup>th</sup> Rescue Squadron and the Fire Crash Rescue Station for the 45<sup>th</sup> Civil Engineering Squadron's fire fighting personnel. Both projects have benefitted from the extensive use of BIM modeling and coordination.

**Leo Fernandez, Assoc. AIA**  
**Aerospace & Defense**  
**Production Technology Leader**

Leonel Fernandez, better known as Leo, is a design and strategic management professional with 15+ years of experience in the Architecture, Engineering, Planning and Technology industries; specializing in Building Information Modeling (BIM) management, design, indoctrination and implementation within the AECOO industry.

Leo joined RS&H as an Aerospace & Defense Production Technology Leader. Leo studied Architecture at the Polytechnic University of Puerto Rico and for over 11 years has been using Building Information Modeling technology to complete a wide range of Architectural Projects; ranging from schools and office buildings to large military facilities for DoD (USACE, NAVFAC, Air Force, Air National Guard & NASA), amongst other government agencies.

Leo is responsible for the implementation of BIM technology, BIM Standards, BIM Execution Strategies, BIM Quality Control Protocols, Training manuals and courseware. Since 2015, he has been teaching BIM to future design professionals at a Florida college institution. He has lectured on the use of BIM in AECOO Conferences, and national events both in the U.S. as well as in the Caribbean. He is also an Industry member of the U.S. Army Corps of Engineer's Industry BIM Consortium.



# Existing Fire Station

- » East side of the airfield
- » Building 810
- » 18,250 SF



**RS&H**



# Fire Crash Rescue Station



The Fire Crash Rescue Station at Patrick Air Force Base is a new 32,000 S.F. facility. Developed in compliance with the latest Air Force BIM Requirements, the goal is to integrate Construction and Operations Building Information Exchange (COBie) data with the Air Force Geospatial and Facilities Management software tools to operate and maintain the facility.



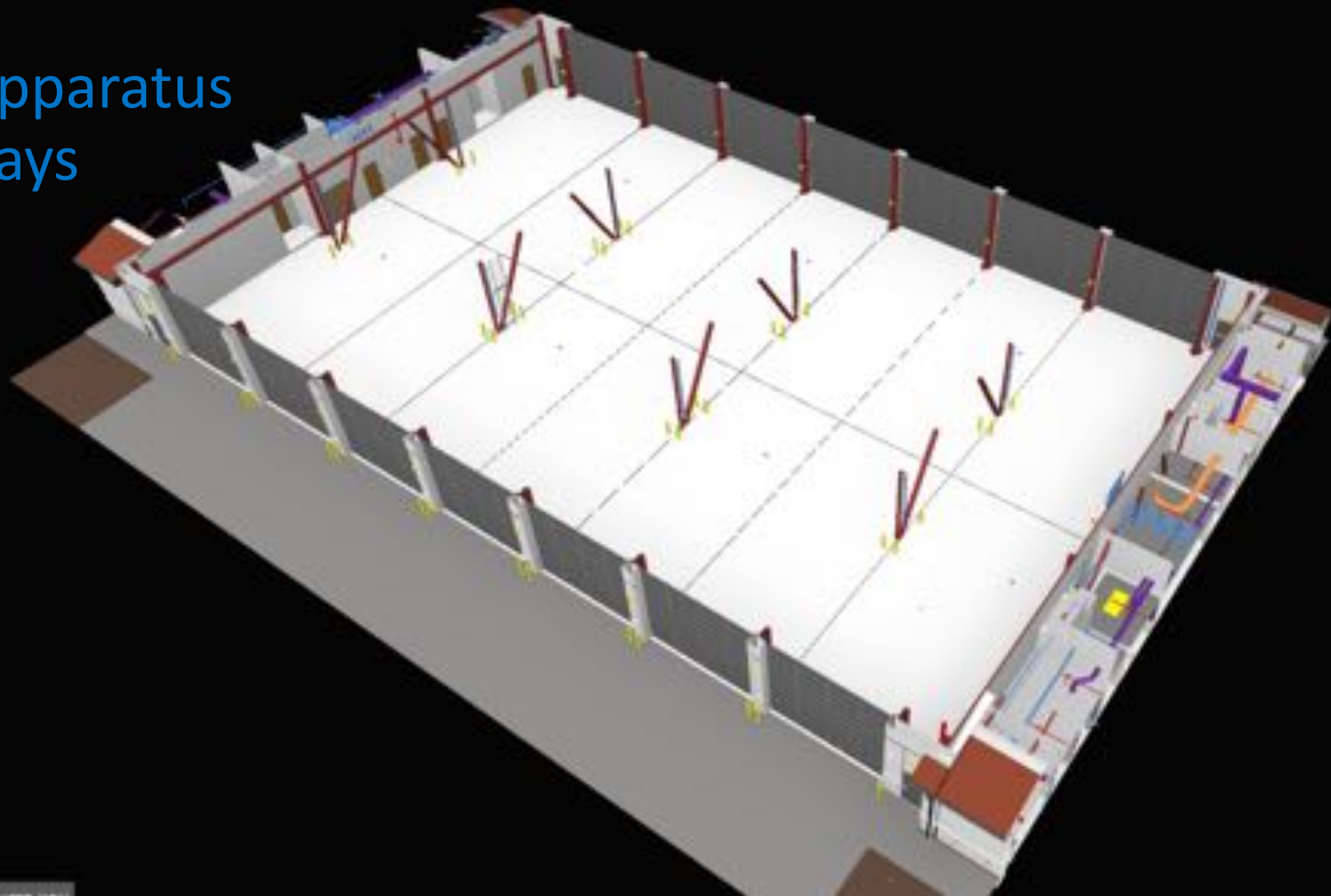




Admin



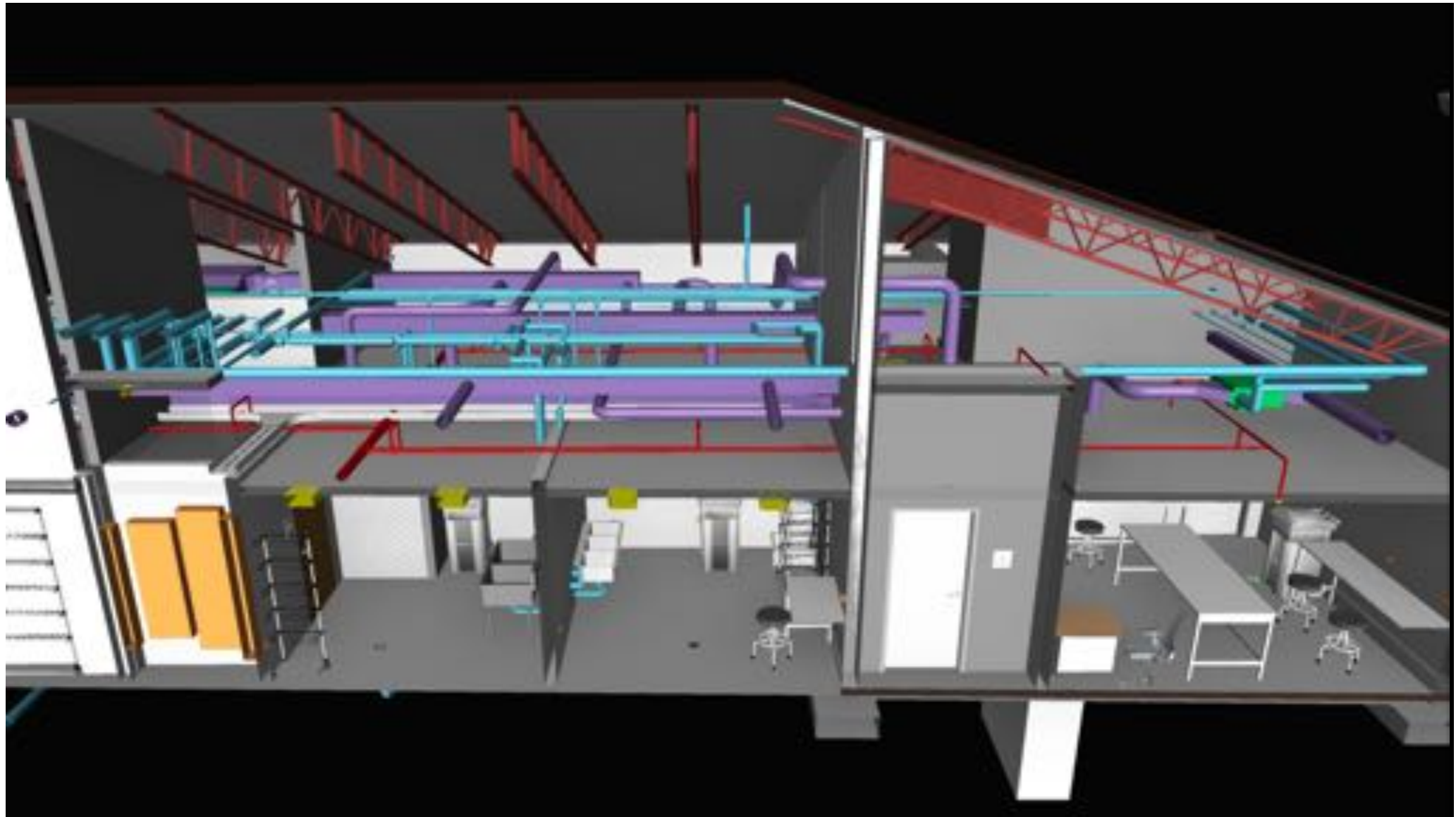
# Apparatus Bays

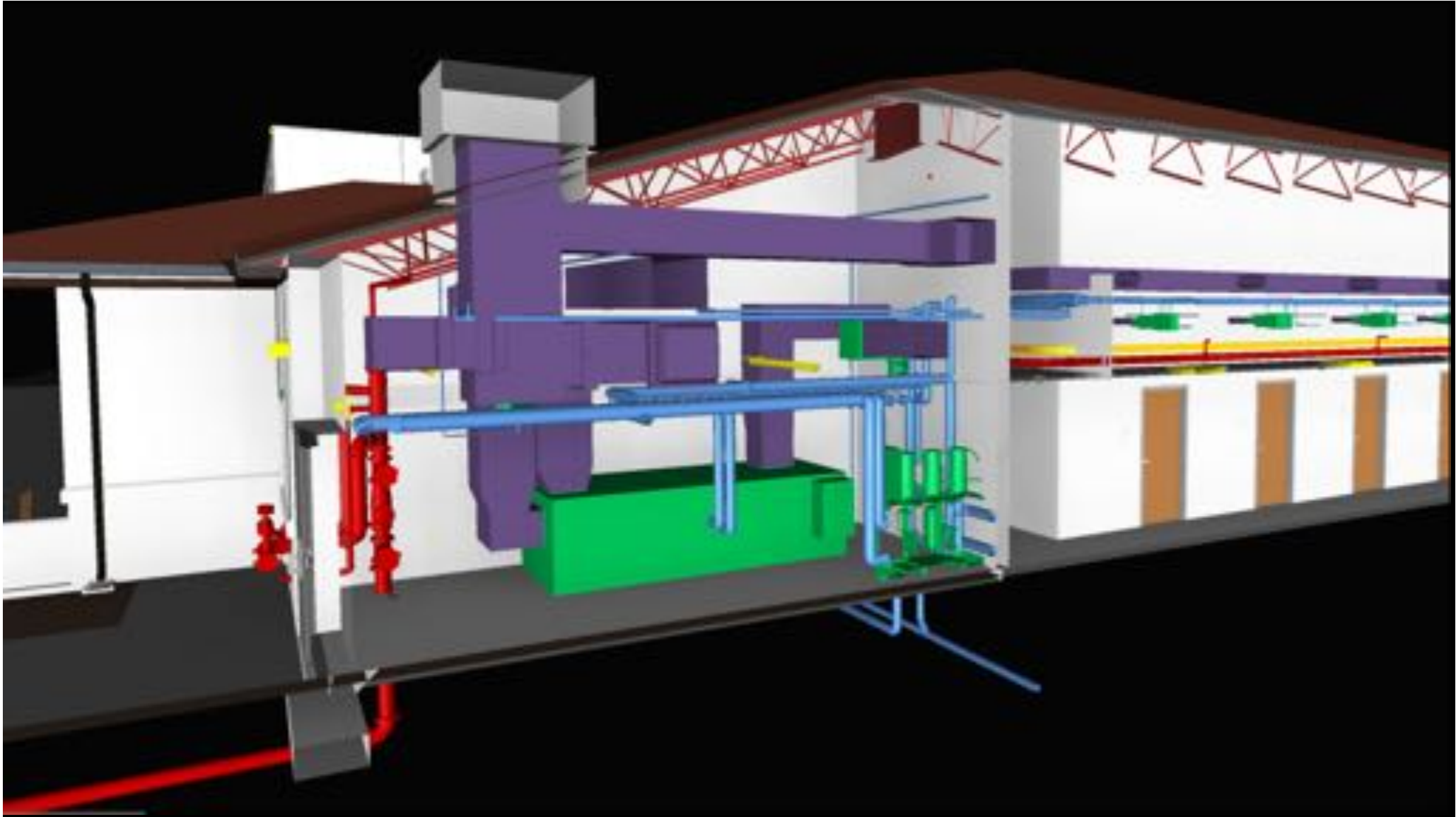


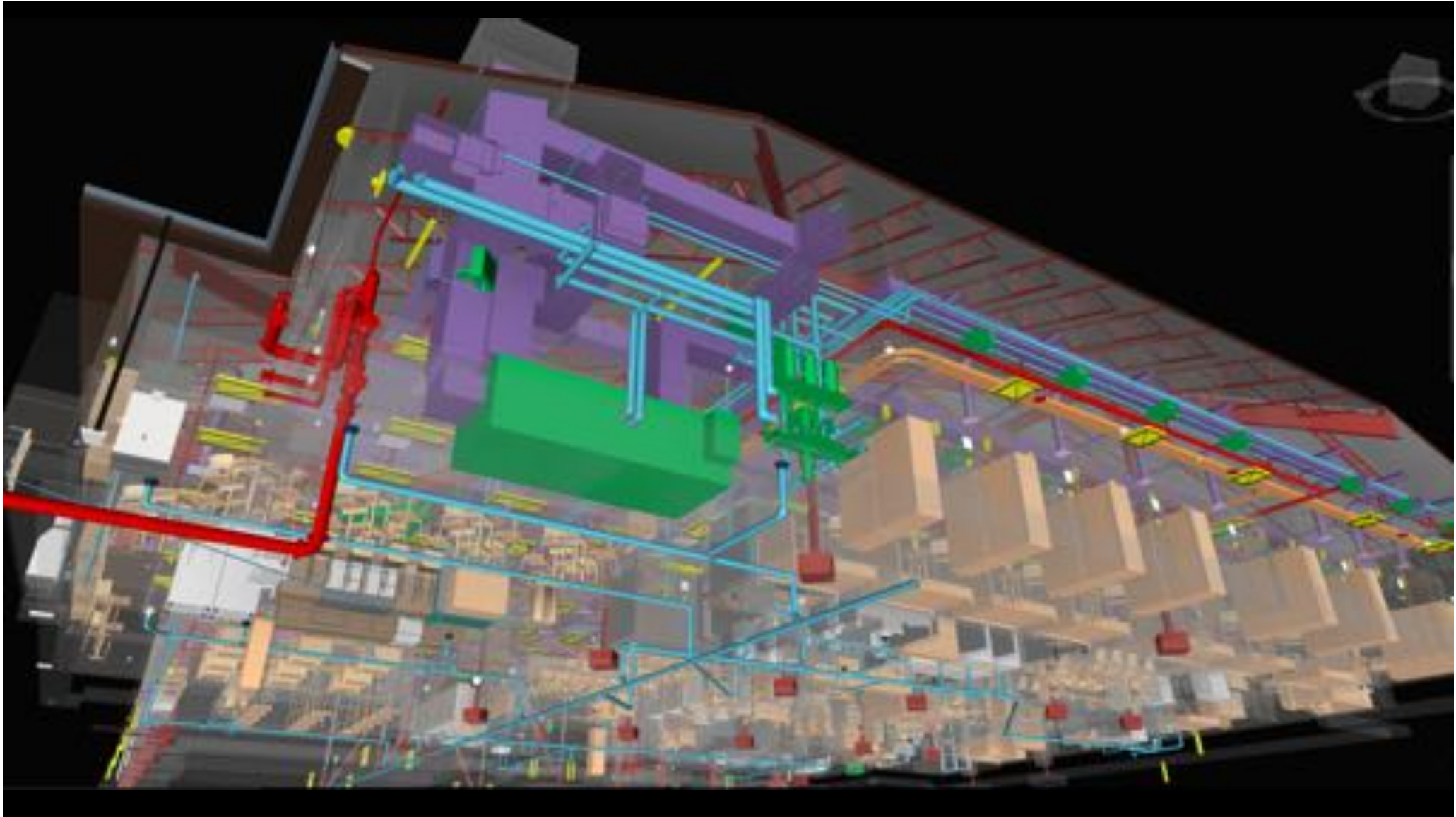
# Support











# Project BIM Contract Requirements

1. BIM Project Execution (PXP) Plan
  - a. BIM Requirements Kickoff & Demonstration Meetings
  - b. Include BIM Execution Strategy
  - c. Include Process Maps (Level One and Two)
2. Minimum Modeling Requirements (M3)
3. Mandatory BIM Uses:
  - a. Design Authoring
    - *Using agency-specific Revit Templates*
  - b. Design Reviews
  - c. 3D Coordination (Interference Management)
  - d. 3D Control and Planning (Geolocation)
  - e. Facility Management Data (COBie)
    - a. *UniFormat*



*QUESTIONS?*

*THANK YOU!*

**RS&H**

