

SPACE LAUNCH DELTA 45

SPACEPORTS OF THE FUTURE *THE INFRASTRUCTURE*

*Andy Duce
Program Manager
Spaceport Development*



UNITED STATES
SPACE FORCE

W O R L D ' S P R E M I E R G A T E W A Y T O S P A C E





SPACE
LAUNCH
DELTA 45

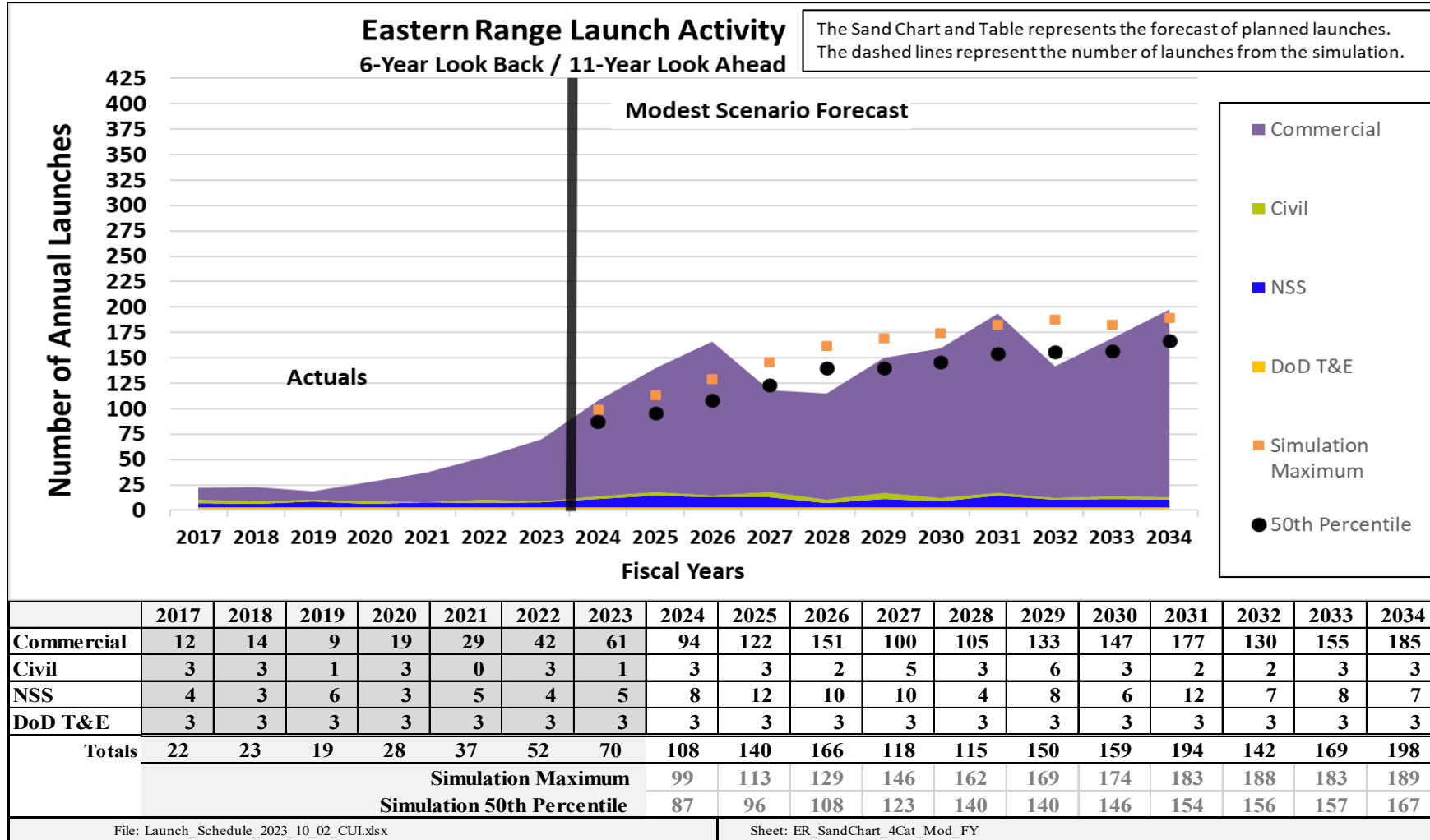


Program Scope & Deliverables

- The U.S. Space Force's Range of the Future 2028 Strategic Intent identified the requirement to increase launch posture over the next 10 years. Infrastructure must be improved to meet this new requirement.
- **Primary Goals:**
 - Range must be able to support launching EVERY day.
 - Range must be able to support multiple launches per day.
 - Range must eliminate all critical day restrictions.
 - Establish infrastructure redundancy and resiliency.
 - Reduce personnel impacts associated with launch and landing activities.
 - Quick execution projects by completing environmental planning upfront.
- **Previous Completed for SPotFi Execution:**
 - District Plans: Cape Canaveral Space Force Station & Patrick Space Force Base
 - Infrastructure Roadmap (IR)
 - Environmental Assessments (EA): Cape Canaveral Space Force Station & Patrick Space Force Base
 - Program Integration Office (PIO): Stood up 20-person office to execute program

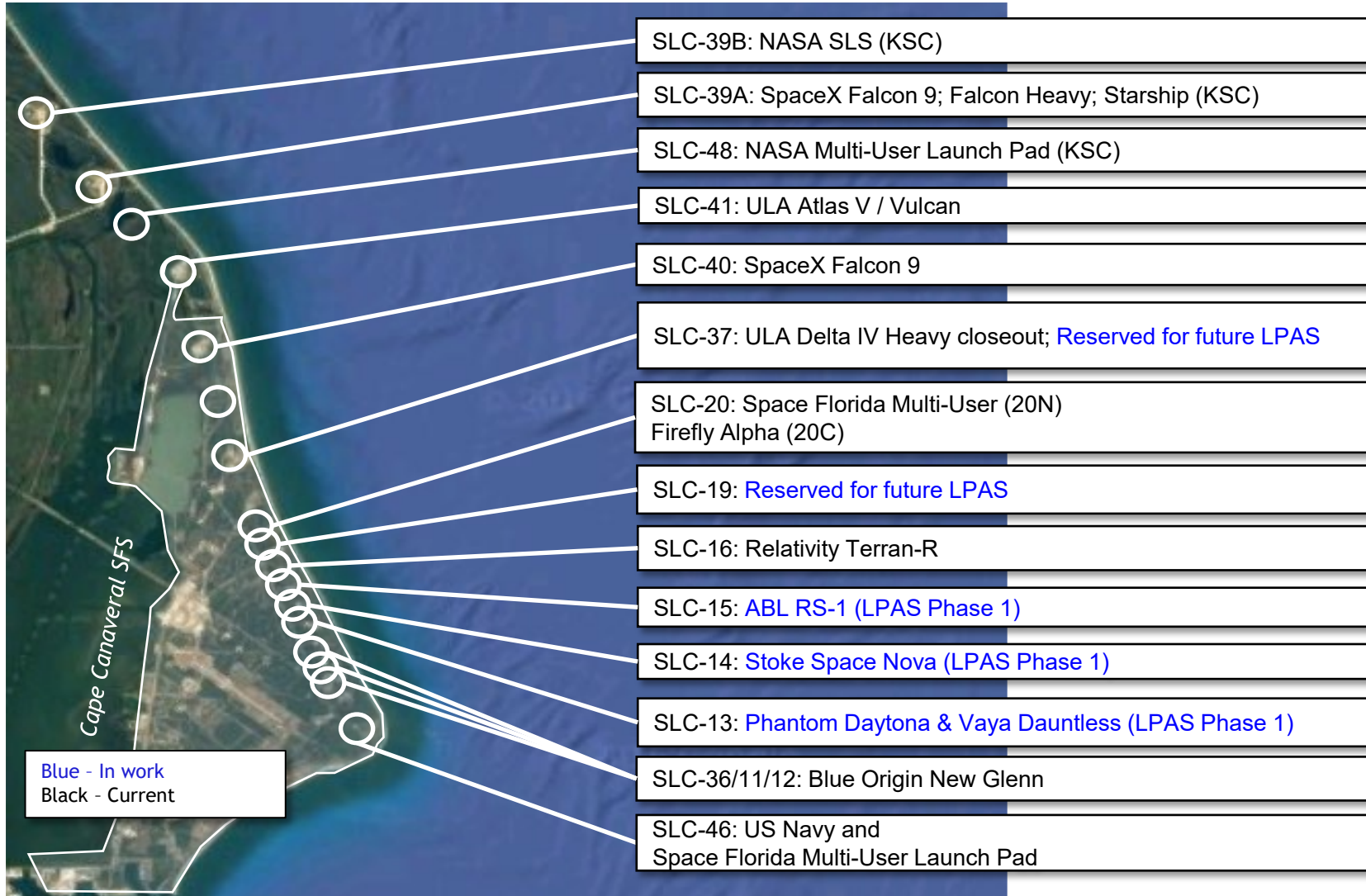
What's Driving this Program Need

SPACE
LAUNCH
DELTA 45



What's Driving this Program Need

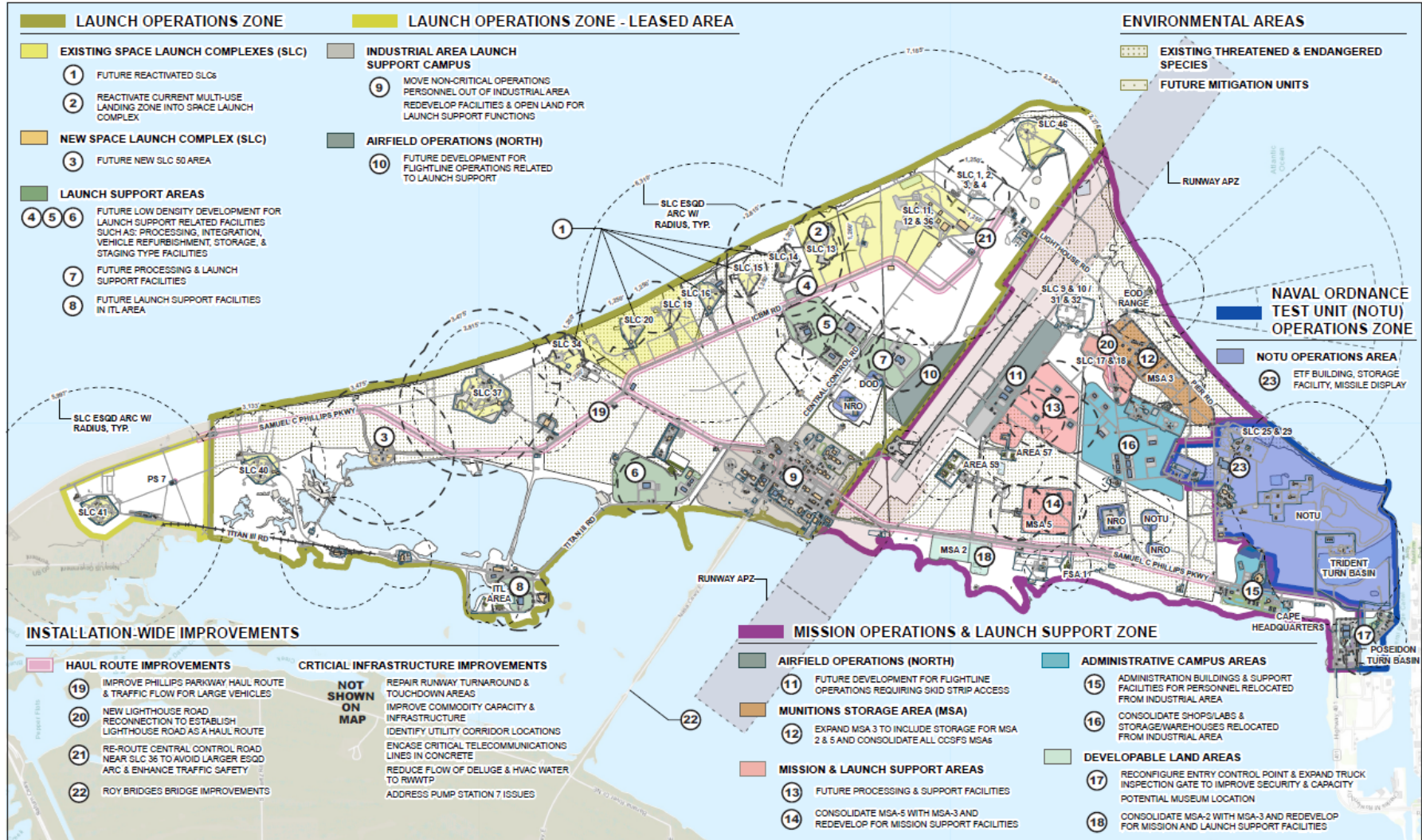
SPACE
LAUNCH
DELTA 45



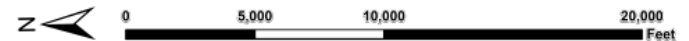


CCSFS District Plan

SPACE
LAUNCH
DELTA 45

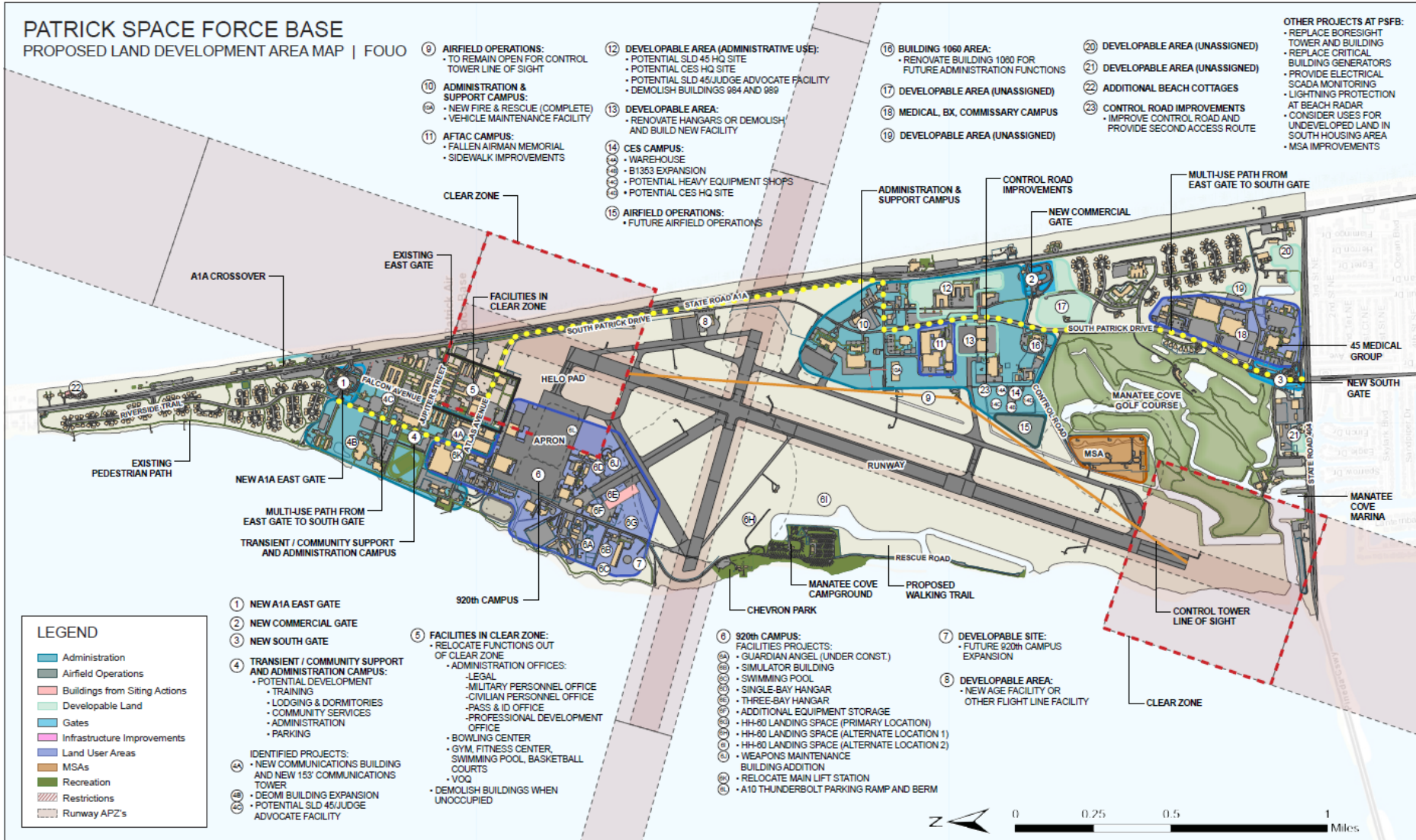


CAPE CANAVERAL SPACE FORCE STATION | SPACEPORT OF THE FUTURE
PROPOSED DEVELOPMENT AND INFRASTRUCTURE IMPROVEMENTS ROADMAP

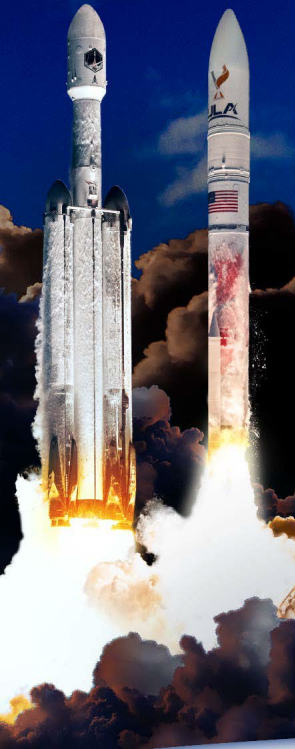


WORLD'S PREMIER GATEWAY TO SPACE

PSFB District Plan



SPACE
LAUNCH
DELTA 45





SPACE
LAUNCH
DELTA 45



CUI



IR - Completed Projects

Project #	% Complete	Project Name	Amount
DBEH 12-1765	100%	Upgrade SCADA Controls at RWWTP	\$450,000
DBEH 20-1563	100%	Repair Lift Stations, Various	\$1,297,387
KSCC 18-1543	100%	Repair Weather Towers, Multi	\$474,515
KSCC 19-1534	100%	Construct Final Denial Barrier, North Gate	\$612,680
SXHT 16-1115	100%	Construct Boresight Tower & Equipment Building, B1653	\$1,182,665
DBEH 19-1508	45%	Design - Relocate Weather Station to SLC - 17 (Only 45% required for DB solicitation)	\$350,000

Total: \$4,367,247

CUI



SPACE LAUNCH DELTA 45



Project #	FY	% Complete	Project Name	Amount
DBEH 22-7768	2024	15%	Charrette - Construct Philips Parkway Haul Route	\$82,820
DBEH 22-7740	2024	98%	Design - Install Water Main, ICBM Rd	\$510,095
DBEH 22-7743	2024	98%	Design - Install Wastewater Main, ICBM Rd	\$1,099,000
DBEH 22-7760	2024	60%	Design - Install Redundant Power Distro, CCSFS (USACE)	\$843,760
DBEH 22-7763	2024	60%	Design - Install Emergency Generator at MOC (USACE)	\$731,000
SXHT 21-1011	2023	40%	Repair Lightning Protection, B969	\$332,323
DBEH 17-1568	2024	17%	Rpr CCSFS Runway, B50305	\$49,571,480
KSCC 19-1511	2023	10%	Modify Deluge Pump Suction and Discharge, Pump Station 7	\$509,100
SXHT 22-1015	2022	10%	Repair Generator, B962	\$367,620
JJAE 18-1504	2023	40%	Repair Missile Guidance Station, B28001	\$4,116,295
SXHT 14-1045	2022	80%	Repair Generator, B1497	\$358,000
SXHT 16-1104	2022	40%	Repair Generator, B423	\$285,000
DBEH 02-1675	2023	56%	Repair 'B-Line' Supporting Launch Complexes	\$4,232,456
DBEH 19-1517	2023	95%	Repair Cable & Splices in Feeder from North Substation	\$1,456,414
DBEH 22-7759PA	2024	5%	(Design) CCSFS Comm Duct Bank Survey and Design	\$2,996,304
DBEH 15-1579	2024	45%	(Design) Repair Fire Detection System, B54800	\$159,999
KSCC 21-1561	2024	90%	Repair & Certify Weather Tower Fall Protection	\$131,054
SXHT 14-1044	2024	1%	Repair Lift Station 650 Holding Tank	\$1,373,527
DBEH 17-1710	2024	5%	(Design/Build) Repair Roads and Parking	\$1,949,788
DBEH 22-7767	2024	50%	(Charrette) Repair Phillips Pkwy, B20201	\$336,876
DBEH 15-1539	2024	25%	Repair Water Lines, MACA Area	\$6,756,316
	2024	35%	(Design) Archeology Study (Warehouse District)	\$149,691
DBEH 12-1690	2024	1%	Replace Lift Stations, Multiple Across CCSFS	\$2,300,000
DBEH 10-1565	2024	60%	(Design) Repair Optics Maintenance (Hangar G)	\$356,270
SXHT 18-1000	2024	45%	(Design) Repair Water Distribution System	\$237,269
SXHT 00-1028	2024	60%	(Design) Convert Space for Airfield Lighting Vault, B802	\$250,000

Total: \$81,492,457



IR - ERCIP, MILCON & UMMC (FY23-27)

Project #	Construction FY	Project Name	CWE	Status
SXHT 02-3004	2023	Consolidated Communication Center, Patrick SFB	\$ 98.0M	Construction Award - Early 2025
DBEH 07-1588	2023	Repair Electrical Z Line, OH to UG	\$ 8.7M	Construction Awarded - 15 Sep 24
DBEH 16-1571	2023	Construct Water Main to ITL Area	\$ 8.2M	Construction Awarded - 20 Sep 24
DBEH 22-7740	2025	(Design) Install Water Main, ICBM Rd	\$ 10.1M	95% Design Submittal - 12 Sep 24
DBEH 22-7743	2025	(Design) Install Wastewater Force Main, ICBM Rd	\$ 10.0M	95% Design Submittal - 12 Sep 24
DBEH 22-7760	2025	(Design) Install Redundant Power Distro at CCSFS	\$ 7.5M	65% Design Submittal - 31 Oct 24
DBEH 22-7763	2025	(Design) Install Emergency Generator at MOC	\$ 4.5M	65% Design Submittal - 31 Oct 24
DBEH 22-7768	2026	(Charrette) Construct Phillips Prkwy (South) Haul Route	\$ 23.0M	65% Design Submittal - 21 Mar 25
DBEH 03-3000	2027	Construct Consolidated Launch Support Facility, Phase I	\$ 71.0M	35% Design Submittal - 15 Dec 24
DBEH 03-3001	2027	Construct Consolidated Launch Support Facility, Phase II	\$ 60.0M	35% Design Submittal - 15 Dec 24
DBEH 22-7755	2027	Construct Consolidated Shop/Laboratory, PH1	\$ 38.6M	35% Design Submittal - 6 Nov 24
DBEH 22-7784	2027	Construct Consolidated Shop/Laboratory, PH2	\$ 70.0M	35% Design Submittal - 6 Nov 24
DBEH 22-7756	2027	Construct Consolidated Storage/Warehouse Facility, PH1	\$ 44.5M	35% Design Submittal - Dec 24
DBEH 22-7786	2027	Construct Consolidated Storage/Warehouse Facility, PH2	\$ 33.0M	35% Design Submittal - Dec 24

Total: \$334,400,000

SPACE
LAUNCH
DELTA 45





ERCIP, MILCON and UMMC (FY26+)

Project #	Construction FY	Project Name	CWE
DBEH 22-7769	2026	Expand Truck Inspection Area (UMMC)	\$4.8M
DBEH 22-7787	2027	Construct Consolidated Storage/Warehouse Facility, PH3	\$25.8M
DBEH 22-7750	2027	Install Redundant Power Distro, Trident Wharf (ERCIP)	\$0.5M
DBEH 22-7761	2028	Install Redundant Power Distro, ICBM Rd (ERCIP)	- Planning Instruction Issued \$11.4M
DBEH 22-7786	2028	Consolidate Munitions Storage	- Planning Instruction Issued \$126.6M
DBEH 22-7780	2028	Construct Water Storage Tanks	- Planning Instruction Issued \$7.9M
DBEH 22-7773	2028	Construct Consolidated Base Support Complex	- Planning Instruction Issued \$26.3M
SXHT 22-1103	2028	Relocate Lift Station, B650	\$6.2M
DBEH 22-7788	2028	Construct Consolidated Storage/Warehouse Facility, PH4	\$18.8M
DBEH 17-1619	2028	Covert Power Distribution Line R-Line, OH to UG (ERCIP)	\$7.3M
DBEH 22-7764	2028	Widen ICBM Rd	- Planning Instruction Issued \$10.2M
DBEH 22-7785	2029	Construct Consolidated Shop/Laboratory, PH3	\$15.3M
DBEH 03-3002	2029	Construct Consolidated Launch Support Facility, Phase III	\$38.6M
DBEH 03-3003	2029	Construct Consolidated Launch Support Facility, Phase IV	\$55.9M
DBEH 22-7749	2030	Construct Wastewater Treatment Facility	\$10.7M
DBEH 22-7777	2029	Construct Redundant Operations Center	\$207.8M
SXHT 22-1105	2029	Consolidated HQ Facility	\$216.0M

Total: \$626,130,000

SPACE
LAUNCH
DELTA 45



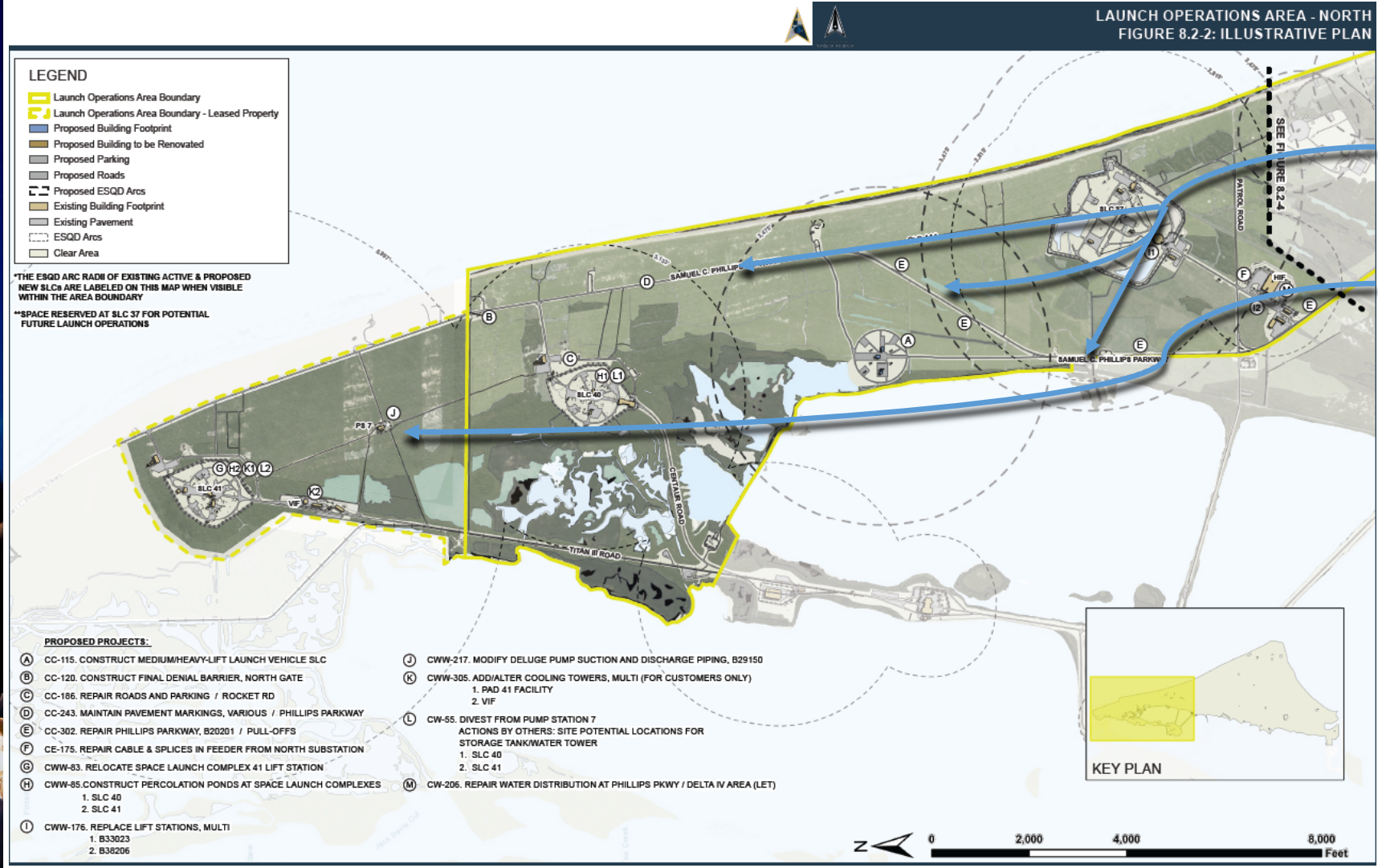
CCSFS in 2029 and beyond

* Project and timelines are subject to change base on requirements and need



Launch District (North Cape)

SPACE
LAUNCH
DELTA 45



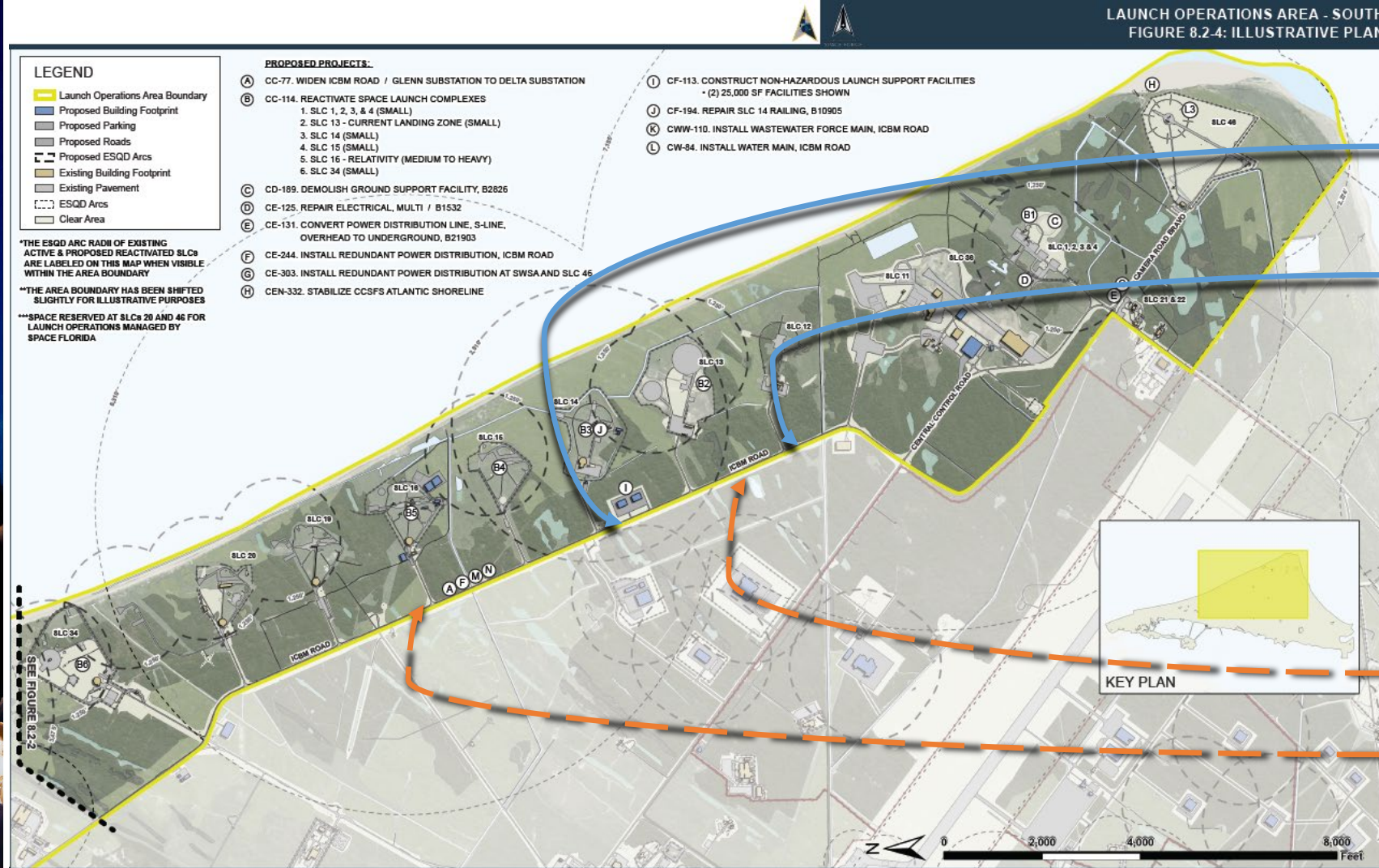
Completed:

North Phillips Parkway Haul Route Passing Lanes (2026)

PS7 Rprs & Upgrades - Final Major Overhaul before Sundown and Shutdown (2024)

Launch District (ICBM Rd)

SPACE
LAUNCH
DELTA 45



Completed:

Construct Wastewater Force Main (2026)

Construct Potable Water Main (2026)

Starting:

Widen ICBM for Hauling (2028)

Redundant Power Distro (2028)



Mission Support District

SPACE
LAUNCH
DELTA 45



Completed:

Extend Lighthouse Rd (2026)

Relocate Weather Stn (2026)

Construct S Phillips Haul Route Improvements (2027)

Starting:

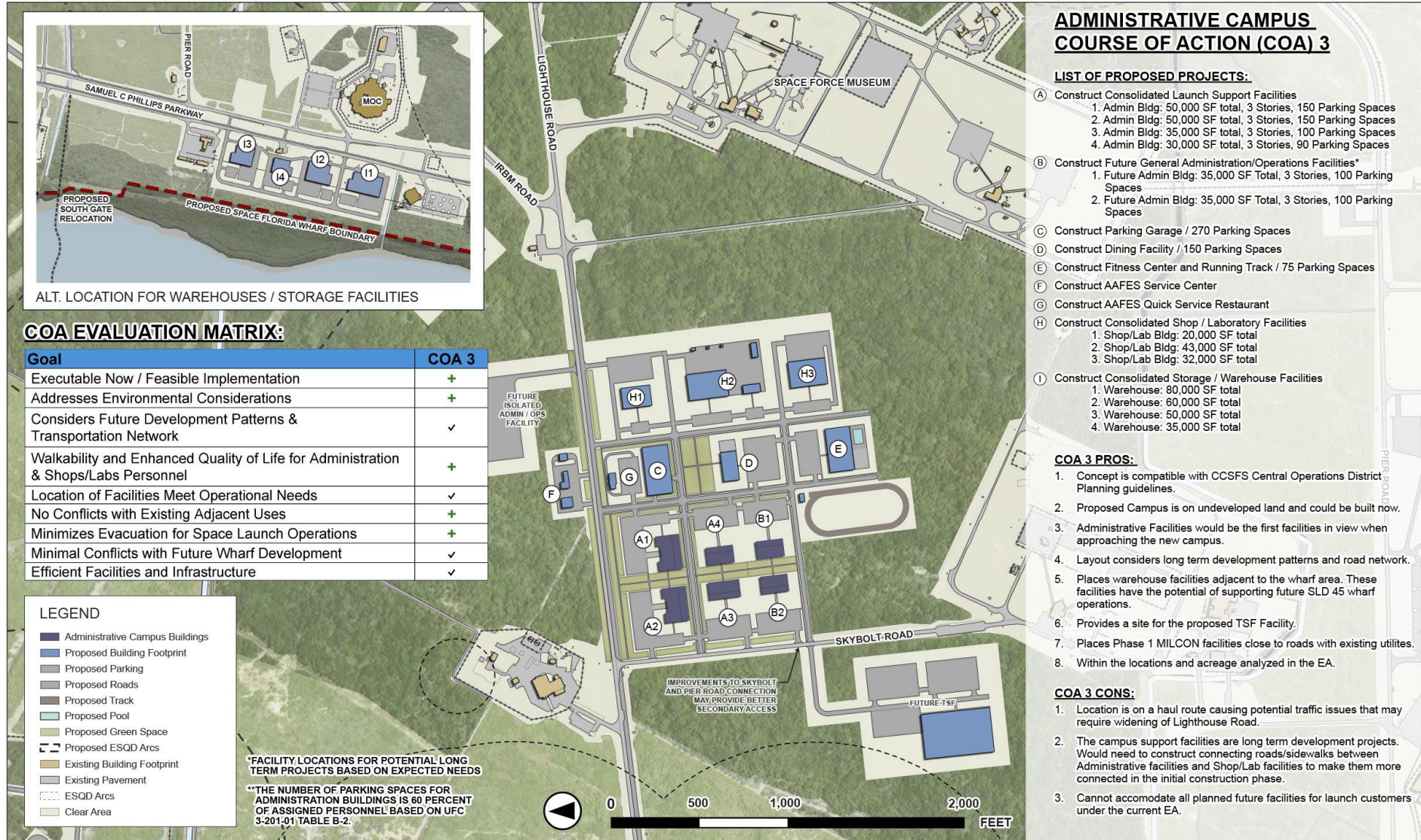
SLD 45 Admin Campus (2027)

New Shops/Labs Areas (2027)

New Warehouse Areas (2027)

Mission Support District (Campus)

SPACE
LAUNCH
DELTA 45





Relocating Non-Launch Missions



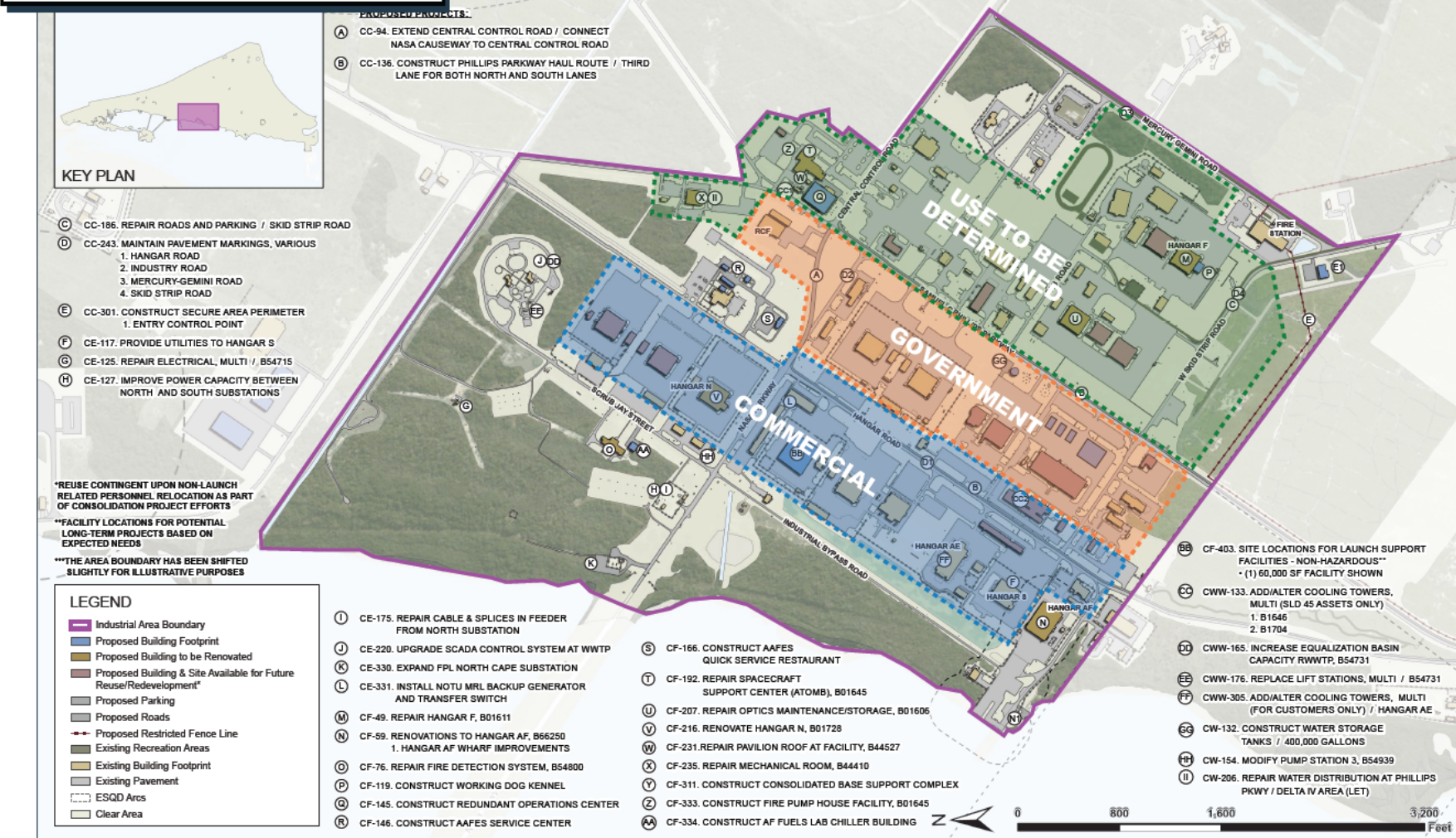
SPACE
LAUNCH
DELTA 45



Launch District (CCSFS Central)

Option 1 (PREFERRED) Industrial Area Zoning:
Locating the Consolidated Base Support Complex to Hangar R&D will allow Hangar N to be turned over for commercial use. This allows for better zoning of the Industrial Area based on government and commercial users.

INDUSTRIAL AREA DEVELOPMENT PLANNING ZONE
FIGURE 8.4-2: ILLUSTRATIVE PLAN



SPACE
LAUNCH
DELTA 45



SPACE LAUNCH DELTA 45

SPACEPORTS OF THE FUTURE THE INFRASTRUCTURE



WORLD'S PREMIER GATEWAY TO SPACE