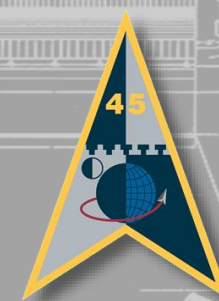




US Army Corps
of Engineers®

FLORIDA AREA OFFICE USACE PROJECT SUMMARY FEBRUARY 2026





US Army Corps
of Engineers.

FLORIDA AREA OFFICE LARGE MILCON

CD Office*	Project Name	PA (\$M)	Award Date (F)	Award Duration	Acquisition Strategy*	KNW Remarks
VA Resident Of	Tampa VA Spinal Cord Injury (SCI)	685.70	30-Sep-30	2800	UR-C	
Patrick Residen	PAFB Consolidated Communications/EOC Facility	112.00	31-Oct-26	1680	UR-C	Pending funds/award
Patrick Residen	Relocate Lift Station B850	6.10	25-Feb-28	540	SB-C	
Cape Canavera	Install Emergency Generator Morell Operations	4.90	31-Mar-26	540	SB-C	Pending funds/award
Cape Canavera	Install Redundant Power Distribution at SWSA	6.90	30-Sep-28	540	SB-C	Bids above UMMC. Reprogram to MILCON
Cape Canavera	Install Wastewater Force Main along ICBM Road	10.00	30-Jun-26	540	SB-C	bundle
Cape Canavera	Install Water Force Main along ICBM Road	10.10	30-Jun-26	540	SB-C	bundle
Cape Canavera	Philips Pkwy, Haul Route	18.50	30-Jun-26	720	SB-C	
Cape Canavera	Construct Consolidated Launch Support Facility, Ph I	84.00	1-May-27	900	UR-C	bundle-2
Cape Canavera	Construct Consolidated Launch Support Facility, Ph II	85.00	1-May-27	900	UR-C	bundle-2
Cape Canavera	Shops / Laboratory Facility Ph I	40.00	1-May-27	900	UR-C	bundle-2
Cape Canavera	Shops / Laboratory Facility Ph II	75.00	1-May-27	900	UR-C	bundle-2
Cape Canavera	Consolidated Storage & Warehouse Ph I	51.00	30-May-27	900	UR-C	bundle-3
Cape Canavera	Consolidated Storage & Warehouse Ph II	41.00	30-May-27	900	UR-C	bundle-3
Cape Canavera	Construct Consolidated Base Support Complex	46.50	1-Apr-28	720	UR-C	
Cape Canavera	Consolidated Munitions Storage (FY28)	221.00	30-Sep-28	1100	UR-C	
Cape Canavera	Construct Water Storage Tanks (FY28)	7.70	30-Sep-28	540	SB-C	
Cape Canavera	Construct Water Storage Tanks (FY28) - Admin	4.40	30-Sep-28	540	SB-C	
Cape Canavera	Install Redundant Power Distribution, ICBM Road	12.00	30-Sep-28	540	SB-C	
Cape Canavera	Widen ICMB Road (FY28)	47.00	30-Sep-28	720	UR-C	
Cape Canavera	Shops / Laboratory Facility Ph III	35.00	25-Feb-30	720	SB-C	
Cape Canavera	Shops / Laboratory Facility Ph IV	35.00	25-Feb-30	720	SB-C	
Cape Canavera	Consolidated Storage & Warehouse Ph III	50.00	25-Feb-30	720	UR-C	
Cape Canavera	Consolidated Storage & Warehouse Ph IV	50.00	25-Feb-30	720	UR-C	
Cape Canavera	Construct Consolidated Launch Support Facility, Ph III	35.00	25-Feb-30	900	UR-C	
Cape Canavera	Construct Consolidated Launch Support Facility, Ph IV	35.00	25-Feb-30	900	UR-C	



**US Army Corps
of Engineers.**

FLORIDA AREA OFFICE LARGE MILCON

MacDill Resider	KC-46A Corrossion Control Hangar #1	25.00	30-Nov-26	720	UR-MATOC	Proposal due 04 Feb
MacDill Resider	KC-46A Fuel Cell Hangar #5	18.00	30-Nov-26	720	UR-MATOC	Proposal due 04 Feb
MacDill Resider	KC-46A Maintenance Hangar #4	27.00	30-Nov-26	720	UR-MATOC	Proposal due 04 Feb
MacDill Resider	ADAL General Purpose MX Hangar #2	30.10	31-May-29	720	UR-C	Work commence after 1,4,5
MacDill Resider	KC-46A ADAL A/C Maint Hangar #3	31.90	31-May-29	720	UR-C	Work commence after 1,4,5
MacDill Resider	KC-46A Aircraft General Purpose Shop	4.00	30-Jul-26	540	SB-MATOC	Site visit held 08 Jan, bids due 12 Feb
MacDill Resider	KC-46A General Purpose Warehouse	11.00	30-Sep-26	540	SB-MATOC	Pending issuance of RFP
MacDill Resider	KC-46A B552 AGE Facility (or KC-46A A/C SE Shop/Storage F	5.20	30-Sep-26	540	SB-MATOC	95% Design Review held 27 Jan
MacDill Resider	KC-46A Apron & Hydrant Fueling Pits	61.00	30-Sep-27	1050	UR-C	Need Code A from AFCEC to Advertise
MacDill Resider	FY-27 MARCENT Program	1.00	30-Sep-27	365	SATOC	
MacDill Resider	FY-27 SOCOM OMA Program	1.00	30-Sep-27	365	SATOC	
MacDill Resider	USSOCOM HQ	1,000.00	30-Sep-30	2000	UR-C	
MacDill Resider	Child Development Ctr / School Age Ctr	35.00	30-Sep-30	720	UR-C	
Homestead Res	SOCSOUTH Climate Controlled Warehouse	33.00	30-Sep-27	720	UR-C	
Homestead Res	SOUTHCOM HQ Pedestrian Gate and Crosswalk	1.70	30-Sep-26	365	SATOC	Need Scope clarification
MacDill Resider	JCSE Joint Communication Support Element	80.00	30-Sep-28	900	UR-C	
MacDill Resider	DLA - Construct POL Building (Fuels Operations Facility)	8.60	30-Sep-28	540	UR-C	
	Louisville Reserve					
Homestead Res	Perrine ARC - Add Alter	62.00	31-Dec-26	1020	UR-C	
Homestead Res	BAK12/14 "Redo"	7.00	15-Apr-26	420	8A Sole Source	Pending Negotiations/ Award
Homestead Res	Bomb Assembly Facility	8.00	15-Sep-26	720	SB-C	
Patrick Resider	Renovate Fuel Cell B647	8.45	30-Jun-27	720	SB-C	



**US Army Corps
of Engineers**

PATRICK SFB/CAPE CANAVERAL SFS FUTURE USACE PROJECT SUMMARY

4

Agenda

Patrick SFB

- FY23 Consolidated Communications Center
- FY28 Relocate Lift Station B650

Cape Canaveral Space Port of The Future

- FY25 Install Redundant Power Distribution
- FY25 Install Generator Morell Operations Center
- FY26 Install Water Main
- FY26 Install Wastewater Main
- FY26 Construct Phillips Parkway Haul Route
- FY27 Construct Consolidated Storage/Warehouse Phase I
- FY27 Construct Consolidated Storage/Warehouse Phase II
- FY27 Construct Consolidated Launch Support Facility Phase I
- FY27 Construct Consolidated Launch Support Facility Phase II
- FY27 Construct Consolidated Shop/Laboratory Facility Phase I
- FY27 Construct Consolidated Shop/Laboratory Facility Phase II

Updates in BLUE



**US Army Corps
of Engineers**

PATRICK SFB/CAPE CANAVERAL SFS FUTURE USACE PROJECT SUMMARY

5

Agenda

Cape Canaveral Space Port of The Future (Continued)

- FY28 Construct Base Support Complex
- FY28 Install Redundant Power Distribution, ICBM Road
- FY28 Construct Water Storage Tanks (Admin and Industrial areas)
- FY28 Construct Consolidated Munitions Storage
- FY28 Widen ICBM Road
- FY29 Construct Consolidated Storage/Warehouse Phase 3
- FY29 Construct Consolidated Storage/Warehouse Phase 4
- FY29 Construct Consolidated Launch Support Facility Phase 3
- FY29 Construct Consolidated Launch Support Facility Phase 4
- FY29 Construct Consolidated Shop/Laboratory Facility Phase 3
- FY29 Construct Consolidated Shop/Laboratory Facility Phase 4

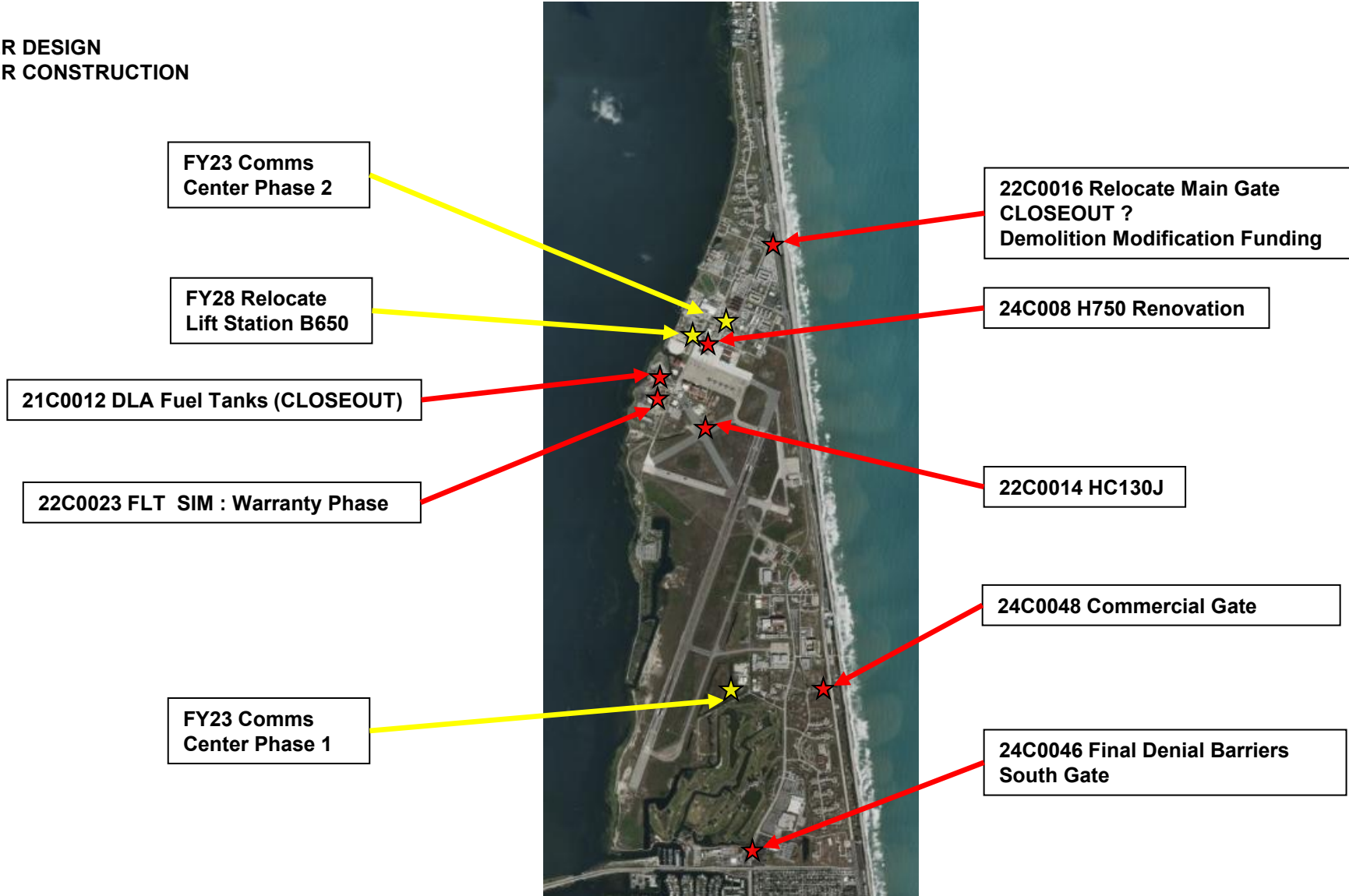


US Army Corps
of Engineers

PROJECT LOCATION MAP PATRICK SFB

LEGEND:

- ★ PROJECTS UNDER DESIGN
- ★ PROJECTS UNDER CONSTRUCTION



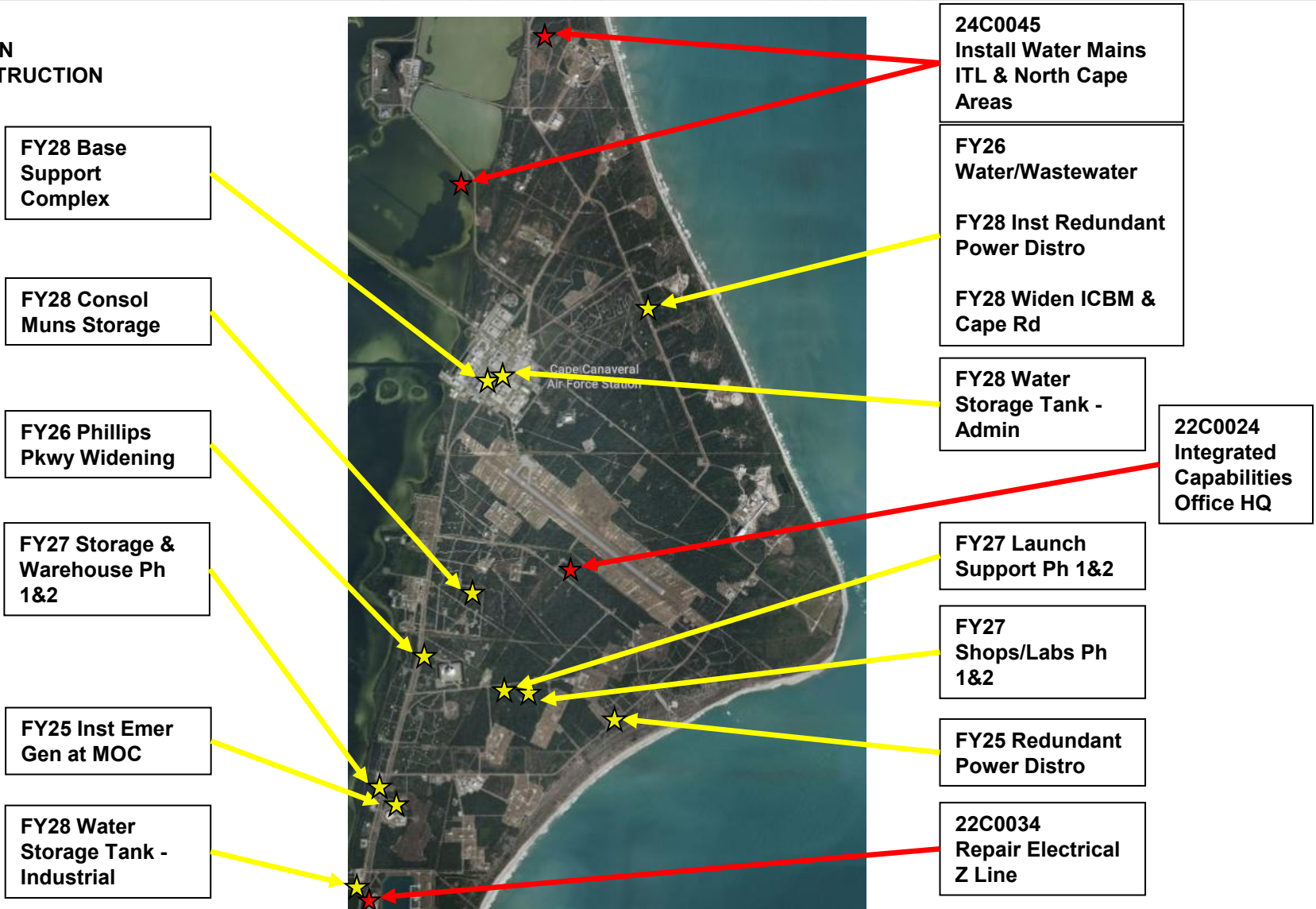


PROJECT LOCATION MAP CAPE CANAVERAL SFS

US Army Corps of Engineers

LEGEND:

- ★ PROJECTS UNDER DESIGN
- ★ PROJECTS UNDER CONSTRUCTION



Updates in BLUE



MOBILE DISTRICT CONTRACTING OFFICER COMMENTS

- General Contractors and AEs need to get smart on all the alternate delivery methods and strategize teaming arrangements. DB procurements will likely be more prevalent in the future and there is language in the RFO about DBB projects “will” be awarded to the lowest price. Not sure if that means IFB or LPTA, but there is a large push to move away from traditional DBB procurements.
- 8(a), we are still moving forward with 8(a) awards under the caveat we could be shut down at any time. There is risk in trying to do anything 8(a), but until they tell us to stop, I am not aware of any District or USACE policy to put us on hold.
- Solicitations for a Surveying and Mapping AE MATOC, Water and Wastewater TXC AE MATOC, and a LATAM AE MATOC should be this calendar year.
- CT-S published a sources sought for a CMS (Services) MATOC yesterday, W9127826RA043.



USACE DELIVERY METHODS

Design-Bid-Build

Traditional approach to construction. Design and construction are sequential and contracted for separately with two contracts and two contractors.



- Benefits**
- Familiar delivery method
 - Control over design
 - Valuable for non-complex
 - Lowest upfront cost

- Risks**
- No "fast-tracking"
 - Change orders/disputes
 - Cost/schedule growth
 - Design liability
 - Misalignment on scope and budget

Integrated Design and Construction

Variation to Design-Bid-Build, selecting construction manager prior to design completion. Note: Private sector CM@Risk.



- Benefits**
- Early collaboration
 - Low cost/schedule growth
 - Off-ramp
 - Incentivizes pricing within budget

- Risks**
- Non-traditional admin
 - Shared risk
 - Ceiling price
 - Initial Target Price can fluctuate up to Ceiling/not final until negotiated (FFP)



Traditional Two-Phase Design-Build

Owner prepares preliminary design documents (often to 35%) before selecting the design-build team and establishing price.

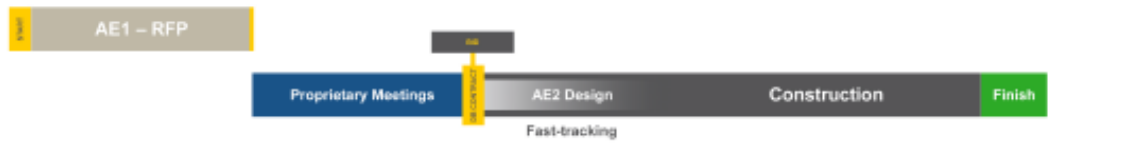


- Benefits**
- Collaboration post-award
 - Reduced design liability
 - Maximizes minimum requirements vs Maximizes budget

- Risks**
- 35% design reduces industry ability to provide solutions within budget
 - Fixed design parameters
 - Higher upfront cost

Design-Build to Budget

DBIA Best Practices. Optimize the budget in terms of quality, scope, and durability with innovative betterments and enhancements within the budget. Best solutions and team.



- Benefits**
- Collaborative proprietary meetings
 - Optimizes budget, schedule (fast-track)
 - Aligned scope

- Risks**
- Fixed design parameters
 - Longer solicitation phase



Progressive Design-Build

Variation of Design-Build. Single contract awarded for design and construction. Final construction price determined once design progresses.



- Benefits**
- Highly collaborative
 - Performance orientation optimizes budget, schedule
 - Aligned scope
 - Quality is team responsibility

- Risks**
- No off-ramp
 - Non-traditional admin
 - Shared risk
 - Initial Target Price can fluctuate up to Ceiling/not final until negotiated (FFP)